

CURRENTLYNC®

HEAVY DUTY STEERING

CE-9701SB CURRENTLYNC® STEERING STABILIZER SHOCK BRACKET KIT FOR 1 1/4" RODS INSTALLATION INSTRUCTIONS & TECHNICAL MANUAL

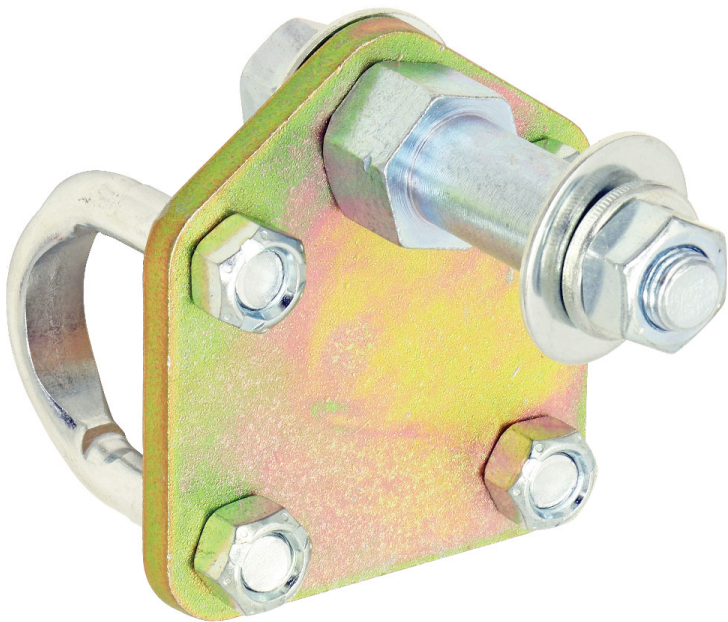


Thank you for purchasing our Currentlync® heavy duty steering stabilizer shock bracket for a 1 1/4" rod. Using basic hand tools, this bracket easily installs and includes the necessary hardware for reattaching your steering stabilizer shock after a steering upgrade.

Tools Required

Basic SAE and Metric Hand Tools

Torque Wrench



WWW.ROCKJOCK4X4.COM



@ROCKJOCK4X4



/ROCKJOCK4X4



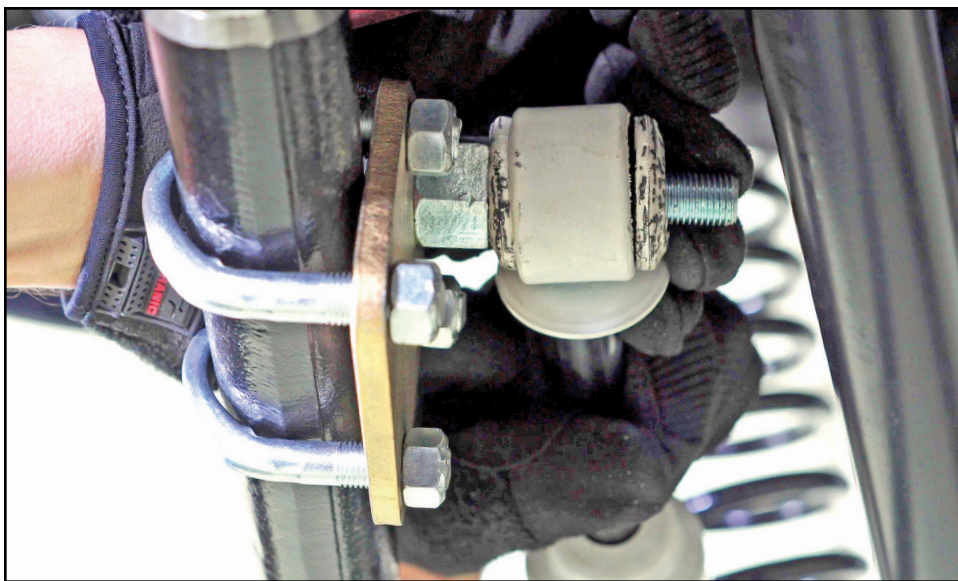
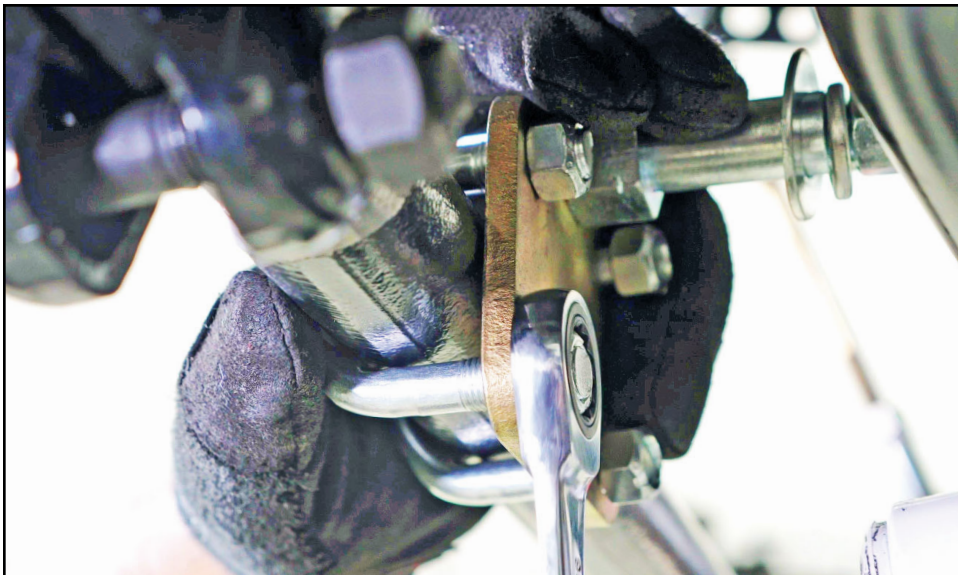
/ROCKJOCK4X4BYJOHNCURRIE

PAGE
1

Step 1

Assemble the new steering stabilizer shock bracket kit onto your tie rod or drag link as shown. Due to the universal nature of the kit, you may install it in any orientation that works for your build that provides clearance for all of your steering components and keeps your installed stabilizer shock at a desirable angle.

Snug the nuts, but do not tighten because you will need to move the bracket assembly around in the next steps.



Step 2

For fitment, install the shock onto the stock stud and then install the supplied flat washer, lock washer and nut, but do not tighten.

Step 3

To set up and adjust the shock properly, turn the wheels all the way to the right to the lock and hold them there. This should completely compress the stabilizer shock. If it does not, completely compress the shock, pull it back out 1/8" and then adjust the positioning of the stabilizer shock bracket on your steering rod to accommodate the length of the shock. Install the shock onto the stud. Snug the 4 bracket nuts further down so the bracket cannot move on the steering rod. Install the shock retaining hardware onto the stud, tighten and torque to 45 ft. lbs.



Step 4

Cycle the steering back and forth to check the shock's clearance relative to other components under the front of your vehicle.

Rotate the shock bracket on the steering rod as necessary to fine tune your clearance needs.

Once you are satisfied with your fitment, go ahead and tighten down the shock bracket nuts and torque to 25 ft. lbs.

